

# SAILING INSTRUCTIONS

## LIGHTHOUSE REGATTA AND HARVEY BBQ

Rockport\_Yacht Club (RYC), 722 Navigation Circle, Rockport, Texas (Organizing Authority)  
August 26, 2023

### 1. RULES:

- 1.1 The regatta will be governed by the rules as defined in *The Racing Rules of Sailing* (RRS).
- 1.2 The rules for all classes are altered so that membership in a class organization is not required
- 1.3 All boats shall have sail numbers which match the registration form. Sail numbers meeting class standards are required.
- 1.4 Appendix T, Arbitration, will be used.

### 2. NOTICES TO COMPETITORS:

These Sailing Instructions will be provided during the Skippers Meeting on Thursday, Aug 24, 2023; and will be posted on the RYC website. Any notices to competitors will be e-mailed or texted to skippers no later than midnight on the morning of the regatta (Aug 26, 2023).

### 3. SCHEDULE OF RACES:

- 3.1 The regatta will start in the Lydia Ann Channel and end near the RYC clubhouse in Aransas Bay.

#### 3.2 Schedule of Race:

##### Thursday, Aug 24, 2023

- |           |  |
|-----------|--|
| 1700-1800 | Registration and check-in at the RYC Clubhouse   |
| 1800      | Skipper's Meeting at the Rockport Yacht Club Clubhouse.<br>(Attendance by the skipper or designated representative is mandatory) |
| 1800-2000 | Happy Hour at RYC Clubhouse  |

##### Saturday, Aug 26, 2023

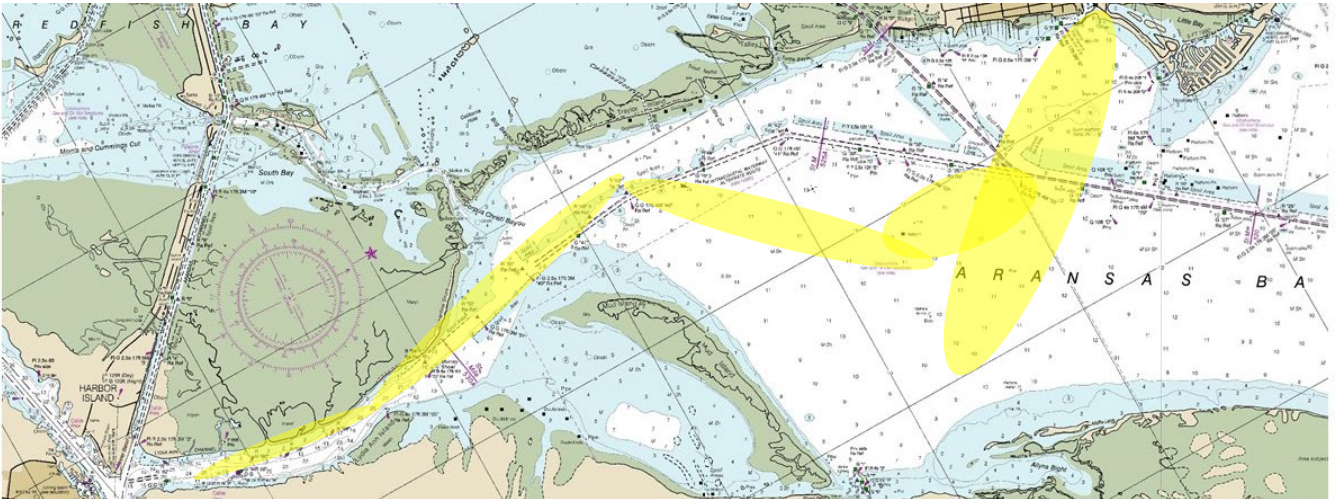
- |      |   |
|------|---|
| 1300 | Warning Signal for the first class, additional classes to follow          |
| 1630 | Boats not finished will be scored in place without handicaps at this time |
| 1700 | BBQ dinner line opened at RYC Clubhouse.                                  |

#### 3.3 Schedule of Shore Activities on Saturday, Aug 26, 2023:

- |      |   |
|------|---|
| 1500 | Bar is opened   |
| 1700 | Band begins playing   |
| 1700 | BBQ dinner line opened                                      |
| 1800 | Race results announced (pending resolution of any protests) |
| 2000 | Band ends playing   |
| 2100 | Clubhouse closed  |



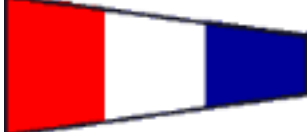
4. **RACING AREA:** NOTE: Shaded area is approximate. The race area will include along the ICW from ICW marker R-62 to ICW marker G-45 and crossing the ICW between ICW marker R-2 and ICW marker G-31. Skippers are responsible for monitoring depths throughout the

course and avoiding areas too shallow for their boat's draft; and for NOT interfering with commercial traffic in the ICW.



**5. CLASS FLAGS:**

The following flags will be used as class flags during starting sequences:

Class	Class Flag
Non-Spinnaker Fleet	
Spinnaker Fleet	
Multi-hull Fleet	

The Signal Boat will fly the blue RC flag and other support boats will fly the yellow RC flag. Support boats may be used to shorten the course and finish the race by flying the "S" flag at the windward or leeward mark to designate the finish line.

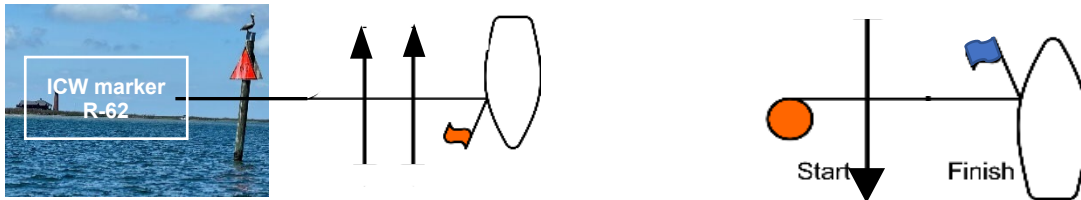
**6. CHECK-IN ON THE WATER:**

Prior to the first warning signal of the race but not before 1230 hours, each competitor shall contact the Race Committee (RC) by hailing the Signal Boat, calling the RC on VHF Channel 69 or calling the Principal Race Officer (PRO) on cell number 214-906-4810 to announce his/her fleet and sail number; and confirming acknowledgement.

**7. RACE COURSES:**

**7.1** The course includes portions of the Intracoastal Waterway. Where possible and depths permit, contestants will sail outside the bounds of the Intracoastal Waterway. **In all situations, contestants will give way to and not interfere with any commercial traffic operating in the course area.**

- 7.2** The start line will be identified with an orange flag displayed on the Signal Boat and ICW marker R-62. The finish line will be identified with a blue flag displayed on the Signal Boat and a red-orange round mark.



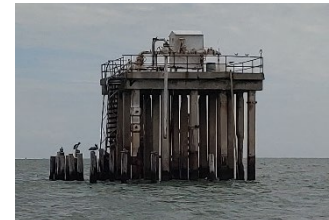
- 7.3** Prevailing wind directions in the area suggest both the start and the finish will be downwind. For the start, the signal boat will be anchored on the EAST side of Lydia Ann Channel and may be anchored upwind with the orange flag on its starboard side. The finish line will be set up for a downwind finish.
- 7.4** The following information provides the course to be sailed and the order in which the marks are to be rounded. Pictures of landmarks or fixed marks are included for purposes of identification. The length of the race course is approximately 14 nautical miles.

Starting line: In Lydia Ann channel between ICW marker R-62 and the Signal Boat

Mark [1]: ICW marker G-45 (leave to starboard at approximately:  
N 27° 56.683' W 97° 03.533')

Mark [2]: RYC mark "B" (leave to port)

Tall square platform with equipment on top and many pilings. When approaching from the south it is the middle of three platforms located east of the ICW at approximately:  
N 27° 58.973' W 97° 01.760'



Mark [3]: RYC Orange Tetrahedron (leave to starboard) at approximately:  
N 28° 01.233' W 97° 02.200'

Mark [4]: RYC mark "D" (leave to port)

Large square platform with wood pilings and steel pipes on top, with four outside piling groups located at approximately:  
N 27° 59.533' W 97° 00.716'



Finish line will be between the signal boat and a red-orange buoy located near RYC at approximately:  
N 28° 01.283' W 97° 02.433'

## 8. MARKS:

- 8.1** Fixed landmarks will be used for the start, reaching, and windward legs of the course.
- 8.2** The leeward mark for rounding to windward will be an orange tetrahedron.
- 8.3** The finish mark will be a red-orange round mark.

## 9. THE START:

- 9.1** The starting line will be between a staff displaying an orange flag on the Signal Boat and the ICW R-62 mark.

- 9.2** A competitor boat that has checked in but not started within 2 minutes of the last start will be contacted by cell phone to confirm its DNS status. This changes RRS A5.1.
- 9.3** Class warning signals will be approximately 2 minutes after the start of the prior class. The starting sequence will be:
- 9.3.1** Non-spinnaker fleet
  - 9.3.2** Spinnaker fleet
  - 9.3.3** Multi-hull fleet
- 9.4** Competitor boats whose warning signal has not been made shall keep clear of both the start line and all competitor boats whose warning signal has been made.
- 10. RECALLS:**
- Recalls will be signaled in accordance with RRS 29. The RC intends to hail the sail numbers of OCS boats after the starting signal. The failure of any boat to hear the hail, an untimely hail of OCS boats, failure to hail any boats, and the order of the boats in the hail shall not be grounds for granting redress. This changes RRS 62.1
- 11. THE FINISH:**
- 11.1** The finish line shall be between a staff displaying a blue flag on the Signal Boat and the course side of the finishing mark.
  - 11.2** The finish will be a downwind finish.
- 12. TIME LIMIT:**
- 12.1** If no competitor boat finishes the race within three hours after the first start, the race shall be abandoned.
  - 12.2** The time limit for all races to finish is at 1630 hours. The RC may shorten the race by one or more legs if the first competitor boat in that fleet will not likely finish within the time limit. When this is necessary, it will be accomplished in accordance with RRS 32.
  - 12.3** Competitor boats failing to finish by 1630 hours will be finished in place without handicaps being applied. This changes RRS 35, A5.1 and A5.2.
- 13. PROTESTS AND REQUESTS FOR REDRESS:**
- 13.1** A competitor boat intending to file a protest for an incident occurring in the racing area shall inform the RC at the finish line of its intent to protest as soon as possible after finishing.
  - 13.2** Protests shall be in writing and delivered to the PRO within sixty (60) minutes after the Signal Boat docks. Protest forms will be available from the Notice Board located between the two restrooms in the RYC Clubhouse.
  - 13.3** The protest time limit will be posted. A list of protests will attempt to be posted on the official notice board within ten (10) minutes of – but no later than thirty (30) minutes after – the end of protest time. This posting constitutes the notification required in RRS 61.1(b) and 63.2.
  - 13.4** A competitor boat is not permitted to protest another boat for breaking sailing instructions 15 or 16. This changes RRS 60.1(a). In addition, penalties for anything other than RRS Part 2 or 3 may be less than disqualification at the discretion of the protest committee.
  - 13.5** Appendix T, Arbitration, will be used. This modifies RRS 63.1 and 63.2.

**13.6** The person who served as mediator during Arbitration may not serve on the protest committee.

**14. SCORING:**

**14.1** The Low Point scoring system defined in RRS A3, A6, A7, and A9 will apply for each fleet.

**14.2** The time-on-distance PHRF for each competitor boat will be applied for the purpose of scoring.

**15. DISPOSAL OF TRASH:**

Boats observed purposefully discharging trash into the water will either be disqualified from the race or be subject to other suitable disciplinary action or both.

**16. SAFETY PLAN:**

**16.1** All participants shall be capable of taking care of themselves and lending assistance when necessary. The decision to start or continue the race is the responsibility of the skipper for each boat.

**16.1.1** The RC will monitor the RYC Lightning Detection System and may abandon the race if lightning approaches the racing area within 20 miles or is anticipated to enter the area within 30 minutes.

**16.1.2** If winds are expected to reach or exceed 30 knots, the race will be abandoned.

**16.1.3** If the regatta is abandoned by the RC either before or during the race, all skippers will be notified on VHF Channel 69.

**16.2** Every boat in the racing area, whether competitor, committee, or other spectator boat is required to comply with U.S. Coast Guard regulations for equipment carried aboard.

**16.3** All participants are instructed to monitor VHF Channel 16 and 69 for safety support throughout the regatta.

**16.4** All participants are instructed to NOT interfere with commercial traffic.

**16.5** All support boats are reminded to wear a safety kill-switch lanyard in accordance with the September 2019 Texas state law, especially when in the proximity of and approaching sailors in and on the water.

**16.6** A competitor who has checked in on the water and subsequently withdraws from a race shall inform the RC as soon as possible. This may also be accomplished by the competitor proceeding to the RYC Clubhouse and notifying the RC by VHF Channel 69 or calling the PRO on cell number 214-906-4810.

**16.7** The nearest emergency medical facility to the Rockport Yacht Club is ER 24/7 Rockport located at 400 Enterprise Blvd. in Rockport. Their phone number is 361-727-8200. For serious or life threatening injuries dial 911 and/or contact the Coast Guard on Channel 16 to seek emergency response.

**Above all, HAVE FUN!**